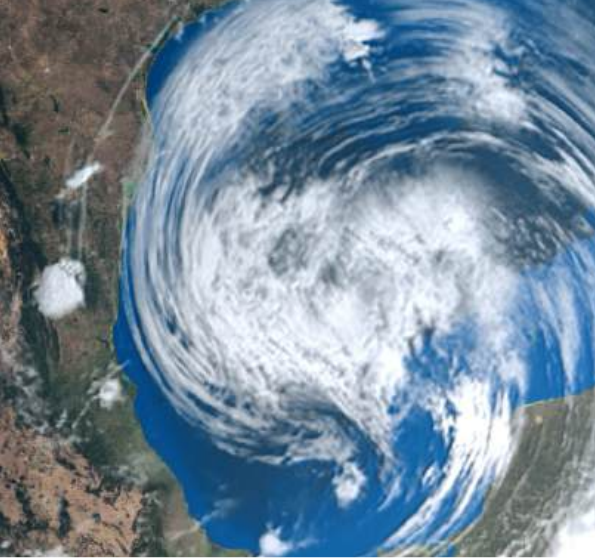


The logo for MAPTYCS, featuring the word "MAPTYCS" in a bold, white, sans-serif font. The letter "A" is stylized with a white triangle pointing upwards. A registered trademark symbol (®) is located at the top right of the word. The background is a solid blue color with a faint, light blue mountain range silhouette at the bottom.

MAPTYCS®

Manage Property and
Climate Risk Exposure



MAPTYCS® is a fast and easy to use solution to manage property exposure and event response.

The platform leverages advanced geospatial technology to help risk professionals assess their property and climate risk exposure quickly and with better accuracy. Users can process, combine, and visualize both internal and external datasets - from government agencies and third-party providers - to assess risk exposure, track accumulations of values, build interactive analytics, develop financial scenarios and monitor severe weather events in real-time with a flexible notifications system.



Capabilities

Assess your property risk exposures – better and faster

Display property assets on a map and access data to visualize the spread of values in your portfolio.

Map portfolio data against CAT zones to calculate and visualize accumulations of values on a selected radius or geographic area.

Simulate unlimited “what if” scenarios for risk exposure analysis and access more in-depth risk assessments using our custom scoring, formula, and layer exposed features.

Monitor real-time weather events to manage response

Track weather events as they unfold to swiftly calculate projected losses and proactively manage loss mitigation, business continuity, and crisis response.

Manage claims management resources with efficiency and speed.

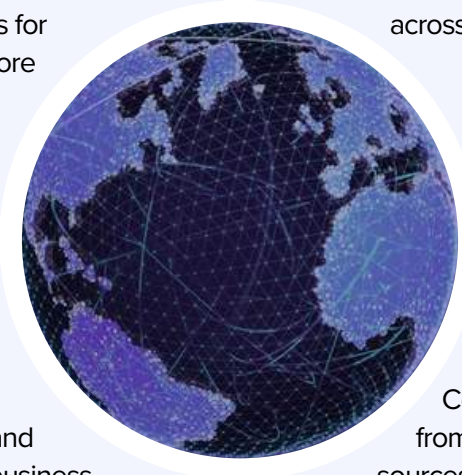
Detect and prevent fraudulent claims.

Develop risk reports and financial scenarios to make informed decisions

Create custom and interactive risk reports to uncover actionable insights and share easy to understand analytics with stakeholders.

Automate renewal submissions.

Build custom dashboards to track key indicators across portfolios.



All your data in one platform – on a map and on a table

Combine and visualize large datasets from proprietary, public, and third-party sources for swift and accurate analysis.

Include your property portfolios exposure data, natural catastrophe maps, historical events, information from government agencies and expert third-party providers.

Access our network of the best and most established data providers.

Use Cases

Single location risk profile	Accumulations tracking	Renewals submissions
Property portfolio risk assessment	Financial scenarios	Risk analytics & automated reports
“What if” scenarios	Data augmentation	Event response management
	Layer exposed calculation	Climate Risk Assessment

Risk Manager & Captive Manager

Optimize TCOR through enhanced risk exposure and risk transfer assessment

- Accurately manage risk exposure for improved risk prevention and loss control.
- Anticipate and manage crisis proactively via real-time weather event monitoring.
- Improve risk transfer negotiation with accurate data and comprehensive renewal submissions.
- Contribute to the company climate risk reporting.
- Effectively communicate risk management strategy through geospatial assessment and customized reports.

Brokers

Improve client servicing using advanced technology

- Develop and share with clients on-demand, comprehensive risk analytics reports.
- Sharpen renewal negotiation skills with comprehensive and detailed submission reports.
- Gain and maintain a competitive advantage for client acquisition and retention.

Insurers

Support risk selection and pricing

- Improve underwriting efficiency and profitability.
- Optimize reinsurance buying and capital management.
- Assess property losses with accuracy during and after severe weather events.
- Optimize event response and claims management resources.
- Help maintain adequate reserves for claims payments.

Powered by reliable data

Core

- | | | |
|--|---|---|
| <input checked="" type="checkbox"/> FEMA US | <input checked="" type="checkbox"/> GSHAP | <input checked="" type="checkbox"/> OpenWeather |
| <input checked="" type="checkbox"/> Flood Map UK | <input checked="" type="checkbox"/> GEM | <input checked="" type="checkbox"/> PPRN |
| <input checked="" type="checkbox"/> Flood EU | <input checked="" type="checkbox"/> NASA Wildfire | <input checked="" type="checkbox"/> USGS |
| <input checked="" type="checkbox"/> FSI Canada | <input checked="" type="checkbox"/> NOAA | <input checked="" type="checkbox"/> XWeather |

Premium

- MunichRe
- Precisely Wildfire
- IPCC (CMIP6)
- And more...

The background of the entire page is a blue-tinted photograph of a mountain range. The mountains are layered, with the foreground mountains being darker and more detailed, and the background mountains becoming progressively lighter and more hazy, creating a sense of depth. The sky is a clear, light blue.

Start navigating property risk with precision

Schedule a meeting or demo with our team at
www.mptycs.com/contact-us